



SURFACES
Technological quartz FOR
A LIFETIME

COMPAC
THE SURFACES COMPANY

COMPAC
THE SURFACES COMPANY



- 1 COMPAC THE SURFACES COMPANY
- 2 What is technological quartz?
- 3 Key Advantages
Naturally antibacterial
- 4 The resins BIO technological innovation
- 5 APPLICATIONS AND USES
- 6 COLOR CHART
- 7 TECHNICAL DATA
- 8 Recommendations for care and maintenance
- 9 THE LIFETIME GUARANTEE
- 10 QUALITY CERTIFICATES





COMPAC THE SURFACES COMPANY

1



COMPAC "The Surfaces Company" is one of the most important companies producing quartz surfaces with "engineered stone" technology.

Strategically situated at **Abrantes (Portugal)** - next to the quartz quarries and the logistic platform that is Lisbon harbour to supply USA, Latin America, UK, and North Europe - the factory sits on a plot of 6.450.000 sqf of which 537.500 sqf house the four production lines which full capacity can exceed 2 million square meters per year.

From 2003, this Spanish family-run company provides its technological quartz products to all the world through an extensive international network of distributors and its own offices in Portugal, Spain, France, UK, Belgium, Singapore, Middle East and the United States.

The large investment in R&D&I made in recent years has resulted in such innovative products as the first pure white "**Absolute Blanc**" or incorporating plant BIO resins in Nature line, the first technological quartz countertops have the natural stone appearance thanks to the grain's depth effect.





What is technological quartz?

2

The **technological quartz** is a surface composed of **up to 95% natural quartz** in which pigments and resins are added and by a process called "engineered stone" are compacted by vacuum vibrocompression obtaining a material with high resistance and decorative qualities.

Quartz is one of the most abundant minerals on the Earth's crust, and it comes in a very wide range of types of qualities. The Mohs scale, which compares the hardness of minerals depending on their capacity to score the surface of softer minerals, places quartz in position number 7, under the hardest elements: diamonds (10), corundum (sapphire) (9), and topaz (8).







KEY ADVANTAGES

3



High hardness and resistance to abrasion and scratching.



Practically zero porosity, preventing the absorption of water or other liquid. Consequently the Compac technological quartz does not need antibacterial chemicals, since the absence of pores prevents bacteria acting as a natural bacteriostatic.



Resistant to fats, oils and acids from foods: lemon, tomato, wine, etc. Great flexural strength and impact resistance.



Easy to clean and maintain.



Uses and applications versatility: ideal for kitchen and bathroom countertops, floors, walls, and for surfaces that have to withstand high traffic of people: shopping centres, airports, government buildings, etc.





The resins BIO technological innovation

4

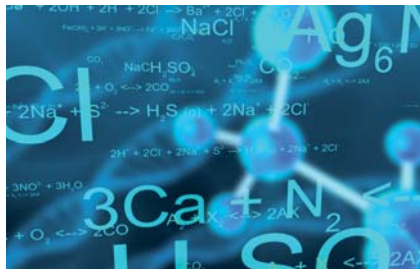
Adding **BIO resins** during the production processes COMPAC has created a new quartz product with superior physical, mechanical and decorative features and more respectful to the environment.

A good R + D + I department job has made COMPAC to achieve a technologically advanced product, increasing its resistance to abrasion, UV and with lower internal stresses.

Incorporating BIO resins from renewable plant sources is a very important technological advance to the market and benefits the entire distribution channel, especially in the handling by fabricators because of its lower shrinkage and internal stresses, supports better the bending, increases its impact resistance,

cracks and cutting fissures, minimizing the slabs' curvature during the storage and, due to its hardness, makes easier the polishing and finishing work.

From renewable plant sources, Bio resins produce no volatile emissions to the atmosphere, resulting in a safer and healthier product for the whole society.



5

Applications and uses



Compac Quartz is highly recommended for household surfaces that come into contact with fatty foods or cleaning products; Such as countertops, walls and floors in kitchens and bathrooms. Extraordinary technical properties such as hardness, strength, zero porosity and easy maintenance make the material suitable.









Due its low porosity it is perfect to be used in places where water and moisture are frequent: gyms, sports centres, spas, locker rooms and showers. Strength and versatility make it the ideal product for all those places which have to support high traffic of people: cinemas, shopping centres, hospitals, airports, government buildings etc. For such places ease of maintenance is important, and the ability to combine large decorative formats and different thickness, reducing the number of joint surfaces.





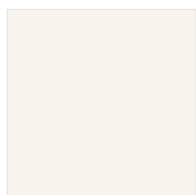
COLOR CHART

COMPAC has created a wide range of colors and textures, able to satisfy any decorative need by combining materials with different furniture and environments.

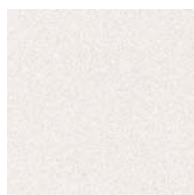
It highlights references with **BIO resins**, which colors and textures that enhance the decorative qualities of natural stones, with a mineral streaks depth effect very difficult to overcome.



Pure colors such as **Absolute Blanc**, cool colors and flashy as **Passion** and the new **TREND Collection**, expressed the most innovative trends in color, exponentially increasing the range decorative capacity: easy to combine with each other and with all the furniture, colors, tones and textures.



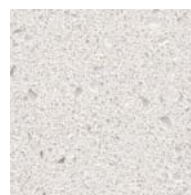
ABSOLUTE BLANC



GLACIAR



LUNA



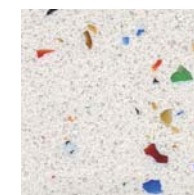
MOON



SNOW



ALASKA



VENECIA



DIM GRAY



WARM GRAY



NOUGAT



CRYSTAL BEACH



BROWN CANYON

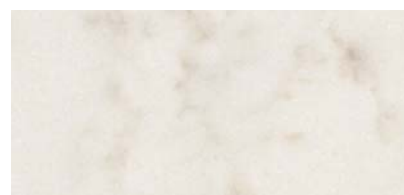


PLOMO

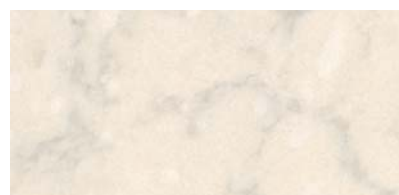



TITÁNEO*

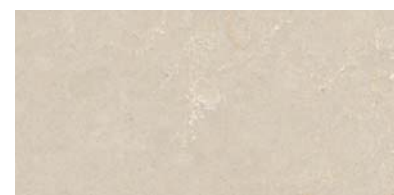
*Special order




 CARRARA



 PERLINO



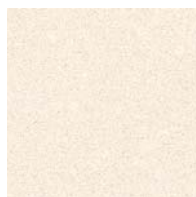
 BOTTICINO



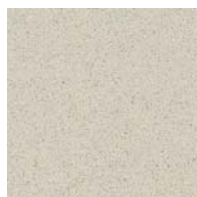
 NOCE



LÁCTEA



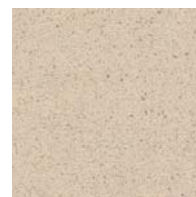
VANILLE



COCO



COOL GRAY



ARENA



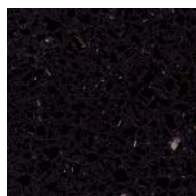
MOKA



CENIZA



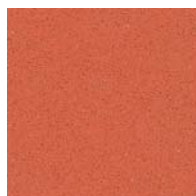
SMOKE GRAY



AZABACHE



APPLE



ORANGE



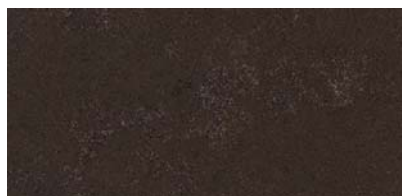
FUCSIA*




PASSION*



RUBI



 IMPERIAL



 PORTORO



 PIERRE BLEUE

















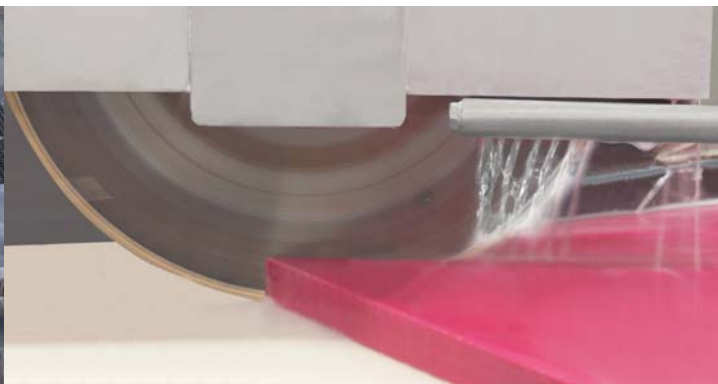


International Abu Dhabi Airport
258.000 sqf Luna, Plomo & Nocturno
Architects AECOM TC 2012



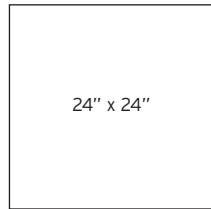
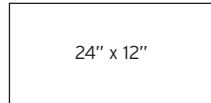
International Abu Dhabi Airport
258.000 sqf Luna, Plomo & Nocturno
Architects AECOM TC 2012

7 TECHNICAL DATA



Sizes

STANDARD SIZES



Useful measurement of slab 120" x 55"

Standard thicknesses: 1/2", 3/4" and 1 1/4" thicknesses depending on application and size.

Edges



STRAIGHT EDGE



STRAIGHT EDGE
Simple thickened



STRAIGHT
Thickened Mitre



POLISHED BEVEL
EDGE



ROUNDED EDGE



ROUNDED EDGE
Simple thickened



COVED EDGE



COVED EDGE
Simple thickened



BULLNOSE EDGE



BULLNOSE EDGE
Simple thickened



OGEE EDGE



OGEE EDGE
Simple thickened

Applications

**KITCHEN AND
BATHROOM WORKTOPS**

**KITCHEN AND
BATHROOM WALL**

CLADDINGS

**KITCHEN AND
BATHROOM FLOORINGS**

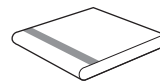
**HIGH TRAFFIC AND
MOISTURE SURFACES**

STAIRS

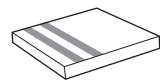
FIREPLACES

**Not recommended for
outdoor use**

Applications with
Carborundum®
for staircases
and ramps



Rounded edge with
1 strip of carborundum



Polished, bevel edge with
2 strips of carborundum

Main Advantages



Minimal water absorption



Uses: Worktops, vanity tops, floors,
walls and high pedestrian transit
areas (stores, shopping centers,
museums...)



Format: Tiles in 12"x12", 24"x12",
24"x24" and slabs in 120"x55"



Standardized thicknesses: Tile
format 1/2" and slab format 1/2",
3/4" and 1 1/4"



Maximum durability



Maximum impact and flexural
resistance



Resistant to acids, oils, liquids...



High abrasion resistance



Low cost maintenance and easy
cleaning



COMPAC TECHNOLOGICAL QUARTZ
is composed up to 95% pure quartz,
5-7% agglomerate polymer in high-
quality polyester or natural resin and
1% pigment. Quartz is one of the
hardest minerals in nature and gives
Compac technological quartz
countertops outstanding resistance
to abrasion and scratching levels.

BIO



The line BIO is made with resins
from renewable plant sources



Better resistance to UV



Lower contraction and internal
stresses



Simpler edge polishing



More heat resistant

Packing list

STD TILE SIZE	THICKNESSES	WEIGHT LBS/SQF	PIECES X BOX	SQF X BOX	LBS X BOX	BOXES X PALLET	SQF X PALLET	PALLET WEIGHT (LBS)	PALLET X 20' CONTAINER
12" x 24" (Europalet)	1/2"	6	5	10	60	40	388	2,385	22
24" x 24" (1 x 1 m)	1/2"	6	4	16	104	28	434	2,900	19

SLABS X 20' CONTAINER		
1/2"	3/4"	1 1/4"
152	96	64

Comparative technical table with any other materials

Technological COMPAC quartz is an engineered quartz surface that looks, feels and weights like natural granite and marble. Yet its strength, hardness and competitive price position it as the superior choice over natural stone, ceramics or plastic solid surfaces. It represents aesthetics, cohesion, reliability and cleanness.

	COMPAC quartz	Solid Surface	Laminates	Granite	Ceramic Tile
Scratch Resistant	YES	No	No	Yes	Some
Stain Resistant	YES	Yes	No	No	Yes
Heat/Burn Resistant	YES	No	No	Yes	Yes
Mold/Mildew Resistant	YES	Yes	No	No	Yes
Long Warranty	YES	Yes	No	No	No

DATASHEET



TYPICAL VALUES									
CHARACTERISTICS	TESTING METHOD	UNITS	1	2	3	4	5	6	BIO
FIRE REACTION (EUROCLASSES)	EUROCLASSES UNE-EN-ISO 9239-1:2002 and ISO 1716:2002	EUROCLASSES	A2fl s1						
THERMAL EXPANSION COEFFICIENT	UNE EN 14617-11: 2006 Test method for agglomerated stone. Determination of thermal expansion coefficient	°C - 1	31.0 x 10 ⁻⁶	34.0 x 10 ⁻⁶	23.8 x 10 ⁻⁶	38.0 x 10 ⁻⁶	31.0 x 10 ⁻⁶	28,6 x 10 ⁻⁶	29.0 x 10 ⁻⁶
FLEXURAL RESISTANCE	UNE EN 14617-2: 2005 Agglomerated stone. Test method for agglomerated stone. Determination of flexural resistance	MPa	40 - 44	54	33	89	53	33	64.1 - 90
IMPACT RESISTANCE	UNE EN 14617-9:2005. Test method for agglomerated stone. Determination of impact resistance	J	9 - 11	12 - 15	7	>16	>12	5	> 15
SLIP RESISTANCE	UNE EN 14231: 2004 Test method for natural stone. Determination of slip resistance using friction pendulum	USRV	5 wet 40-50 dry	5 wet 42 dry	7 wet 69 dry	5 wet 42 dry	7 wet 58 dry	6 wet 52 dry	7 wet 40 dry
WATER ABSORPTION	UNE EN 14617-1: 2005 Test method for agglomerated stone. Determination of water absorption and apparent density	%	0.076 - 0.089	0.073 - 0.102	0.144	0.07	0.084	0.06	0.07
COMPRESSION RESISTANCE	UNE EN 14617-15:2005 Test method for agglomerated stone. Determination of compression resistance	MPa	260	263	275	265	270	151	229
APPARENT DENSITY	UNE EN 14617-1: 2005 Test method for agglomerated stone. Determination of water absorption and apparent density	kg/m ³	2400	2300	2266	2102	2409	2460	2120 - 2450
ABRASION RESISTANCE	UNE EN 14617-4: 2005 Test method for natural stone. Determination of abrasion resistance	mm	25	28.5	27.5	31.0	25.0	27.5	27 - 33
CHEMICAL RESISTANCE	UNE EN 14617-10: 2005 Test method for agglomerated stone. Determination of chemical resistance	C4	C4 Alkalís: Materials maintaining at least 80% of their resistance reference value after 8 hours. Surface hardness						
SURFACE HARDNESS	UNI EN 101 Ceramic tiles. Determination of scratch hardness of surface according to MOHS	MOHS	6-7						6 - 7

The values shown on this data sheet are typical values only, and therefore not legally binding. For further information, please contact our Technical Department.

1: LUNA, PLOMO, VENECIA, MOON, SNOW, ORANGE, COCO,
APPLE, PASSION, FUCSIA.
2: ALASKA, GLACIAR, VANILLE, SMOKE GRAY, WARM GRAY,
DIM GRAY, COOL GRAY.

3: AZABACHE, LACTEA, RUBI, TITANEO, NOUGAT.
4: ABSOLUTE BLANC.
5: CENIZA, MOKA, ARENA.

6: CRYSTAL BEACH, BROWN CANYON.
BIO: PERLINO, CARRARA, PORTORO, IMPERIAL, BOTTICINO,
PIERRE BLEUE y NOCE.

8

Recommendations for care and maintenance.

For periodical maintenance of COMPAC Technological Quartz materials, due to their exceptional physical and chemical characteristics, it is only needed a regular cleaning with a neutral pH product soap/detergent, rinse with water and dry with a dry microfiber cloth or absorbent paper towel. To eliminate any remains or residues, (Eg. oil or fat, wine, vinegar, lemon, soft drinks, coffee, etc.) from the COMPAC TECNOLÓGICAL QUARTZ surface, just wipe with a damp cloth impregnate with neutral pH detergent, rinse with water and dry it.

As follows we will describe some simple treatment for the most common problems:

- **Fat stains:** dilute a small amount of detergent in some water and rub over the stain using a cloth. Next, rinse it off with water.
- **Water lime marks:** pour some vinegar (or any other diluted weak acid such as hydrochloric acid) directly on the surface to be treated. Rinse it off with plenty of water.
- **Silicone stains:** Scrape off using a blade and use a little solvent for any remains left behind (ethanol).

BASIC TECHNICAL SPECIFICATION - MAINTENANCE TIPS

- Do not fit COMPAC Technological Quartz outside or in places where UV ray lamps are fitted (in places subject to intense solar radiation or UV lamps).
- Do not place objects recently removed from heat on COMPAC Technological Quartz surfaces on a regular basis (frying pans, etc.).
- Do not use water repellents or sealers to enhance the shine.
- Do not use strippers, caustic soda, degreasers or products with pH in excess of 10 or chlorine based products. Do not use products that contain hydrofluoric acid or dichloromethane. If you use bleach or solvent, you must rinse it off using water and never leave it long-time in contact with the surface.
- COMPAC Technological Quartz should not be polished, either on flooring or work surfaces.
- Aisle the countertop from external heat sources.

PRECAUTION



CLEANING COMPAC TECHNOLOGICAL QUARTZ POLISHED

Due to their unique physical and mechanical properties and their zero porosity, quartz countertops with polished finish (gloss), only need simple cleaning. You can use any multisurfaces cleaning product with neutral pH, not more than 10, available at any supermarket. You can also use specific products for cleaning the hob.

In all cases, for best results use a microfiber cloth good quality.

Removing stains from the dishwasher.

The common dishwashing detergents may form a shiny coat on the satin counter, causing stains. These residues can only be removed using products with low ammonia concentration: apply them on the surface and leave them for a few minutes. Then rub it gently with a soft brush and rinse with plenty of water. Finally dry with a soft cloth or kitchen paper.

Removing marker, food colors and fruit stains.

Pen stains can be cleaned with a little alcohol. The food coloring and fruit disappear with diluted bleach solution.

Removing dry spots caused by hard water.

Generally you can remove them with vinegar dissolved in water and a soft cloth. For removing dry water spots, use warm water and vinegar, leaving a few minutes to soften the stain, then rub gently with a cloth until it disappears, rinse it with water and dry.

NOT USE!

Besides those previously mentioned, highly alkaline products or chlorine based, such as oven cleaner or solvents, are not suitable for cleaning COMPAC quartz countertops. Neither should use corrosives, strippers, hydrofluoric acid, caustic soda, or products with a pH above 10. Furniture waxes and oil soaps or degreasing are not indicated, as they can change the brightness of the surface.

CLEANING THE COUNTERTOPS WITH OTHER FINISHES

These surfaces require more care and maintenance as they are much more sensitive to everyday life stains.

9 LIFETIME WARRANTY



COMPAC offers "**Lifetime Warranty**" on the bathroom countertops kitchen worktops for residential use. The terms, conditions and instructions for registration are in our site www.compac.es.

The guarantee registration form is made automatically completing the data requested by the system, thus facilitating the administration of the guarantee certificate.

GEOGRAPHICAL LIMITATION / CONSULT YOUR DEALER.

QUALITY CERTIFICATES

10



ISO 9001

Bureau Veritas SA Certification to COMPAC, that applies to the design, manufacture and marketing of agglomerated stone.

This certification is a valuable asset because it demonstrates our achievements and ongoing commitment to run business in a deeply professional and consistent way.



GREENGUARD

The certificate issued by the Greenguard Environmental Institute ensures that COMPAC products compliant indoor air quality with respect to volatile organic compounds (VOCs). Seals are awarded Greenguard Indoor Air Quality Certified (Certified IAQ) and The Greenguard Children & Schools Certified (Certificate of Schools and Children's Venues), the second is one of the most stringent in the industry.



NSF

NSF certification is given by the recognized U.S. agency that acts on the issuance of certificates of health, hygiene and environmental considered COMPAC products safe material for direct contact with all food.



Classification of construction products and building elements of fire performance. Certificate for the quartz product range by AFITILICOF Centre of Fire Testing and Research (Association for the Promotion of Research and Fire Safety Technology) according IMO Resolution A.653 according to IMO Resolution MSC 61 FTPC Code (67).



Alimentary contact certificate

All COMPAC Technological Quartz products comply with the European regulation EC 1935/2004 for articles intended to come into contact with food.

COMPAC
THE SURFACES COMPANY



compac.us

SPAIN
Travessera d'Albaida, 1
46727 Real de Gandía · Valencia (Spain)
T: +34 902 300 155 · F: +34 96 295 41 51
info@compac.es

COMPACSTONE USA, INC.
1666 NW 82 Avenue
Doral, FL 33126
T: 305 406 3600 · F: 305 436 3783
info@compac.us

2013/04