

HI-MACS® 2017

Because great designs need the best material





Facades and Wall Cladding

Page 10 – 13



Furniture Design

Page 38 – 39



Public Buildings and Offices

Page 14 – 19



Outdoor

Page 40



Hospitality and Gastronomy

Page 20 – 25



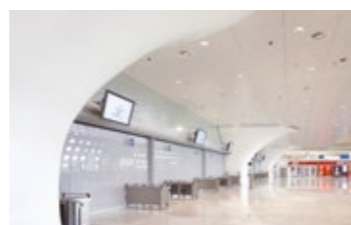
Education

Page 41



Shops and Exhibitions

Page 26 – 27



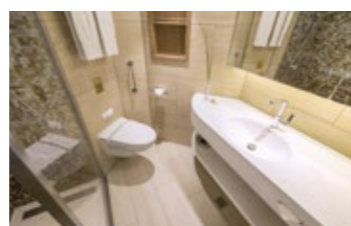
Airport

Page 42



Healthcare

Page 28 – 29



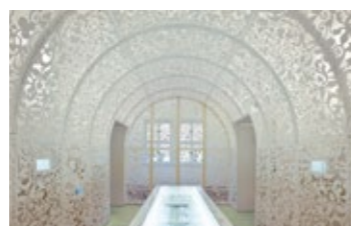
Marine Industry

Page 43



Living Spaces

Page 30 – 31



Best of the Last Decade

Page 44 – 45



Kitchen

Page 32 – 34



Bath

Page 35 – 37

Team work &	Page 04 – 05
Material properties	Page 06 – 07
HI-MACS®. Because Quality Wins.	Page 08 – 09
Product offering	Page 46
Ecology	Page 47
LG Hausys Network	Page 48 – 49
Specifications	Page 50 – 53
Colours	Page 54
Sinks and Bowls	

What is HI-MACS®?

An outstanding material.

HI-MACS® is a delicate composition of acrylic, minerals and natural pigments that combine to create a smooth, non porous, thermoformable and visually seamless surface.

And an ongoing inspiration.

We have gathered a number of projects here, all of which are capable of inspiring and creating a desire to tread new paths.

The material meets the highest standards for quality in all aspects: material performance, fabrication, functionality and hygiene. Thanks a large part to this quality and the outstanding flexibility in fabrication and design, HI-MACS® offers countless advantages over conventional materials.

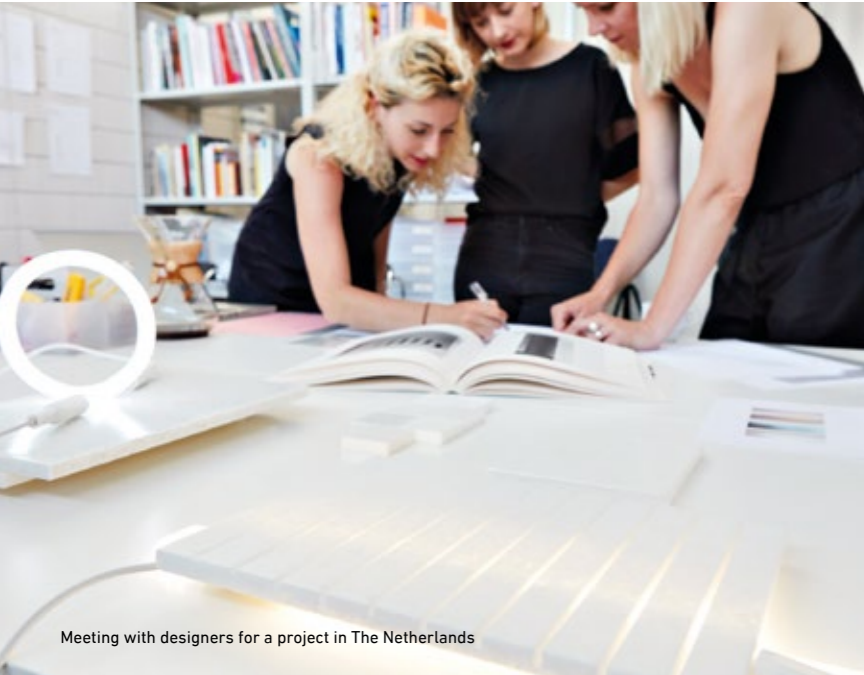
HI-MACS®. Because Quality Wins.

Photographed by Rafael Krötz



We believe in team work.

Anyone who wants to achieve goals, understands the importance of partnerships. HI-MACS® is a reliable partner in every aspect. We provide full support and a reliable partners community, when it comes to handling and service, with our Quality Club Network.



Meeting with designers for a project in The Netherlands



Tradeshow in London



Quality Club Training session

Outstanding features abound. A compelling material.



Simple processing

Although HI-MACS® is almost as robust as stone, it can be worked in the same way as wood. Using conventional carpenters' tools, this solid surface material can be sawn, routed or drilled. Thanks to the new Thermalcure-technology the surface of HI-MACS® performs better than the standard in Solid Surface. You save precious time because it is easier to work with.



Seamless perfection

HI-MACS® allows for visually seamless fabrication. Smooth integration creates large areas without visible joints or edges as well as the flush mounting of bowls. This results in extremely hygienic, easy-to-clean installations, ideally suited for use in hospitals and laboratories.



Three-dimensional design

HI-MACS® boasts a simple heating process and three dimensional thermoforming capabilities. This enables greater forming flexibility compared with other conventional materials so that spectacular ideas can quickly take on a concrete shape.



Dramatic translucency

Certain colours and thicknesses of HI-MACS® exhibit a special translucency when exposed to light. The translucent properties of HI-MACS® make it the perfect choice for lamps and illuminated furnishings.



Huge colour spectrum

Colour selection is a crucial factor when it comes to high-quality design. HI-MACS® offers an enormous range of colours. No matter what colour you choose, HI-MACS® remains 100% homogeneous.

Quality is in our DNA.

HI-MACS® benefits from the high-tech infrastructure and development-experience of LG Group who regularly bring stunning innovations to life. LG guarantees superior quality for all raw materials; the acrylic contained is produced by our own factories, certifying excellence from the source.

Quality is available.

We stock the entire colour and product range in 40 local warehouses in Europe and one huge central warehouse in Belgium.

Quality is worldwide support.

Full access to LG after-sales support and fabrication network worldwide.

Quality is an excellent network of highly skilled craftsmen.

Our highly skilled fabrication partners enjoy regular training to provide you with the best possible product. They have access to the best in class training material and support. The most skilled fabricators of HI-MACS® are easy to identify as they are certified members of the HI-MACS® Quality Club. Contact us for your nearest member.



Quality is the longest warranty in the market.

We support our Quality Club Members with a 15 year warranty. The longest warranty in the solid surface market.

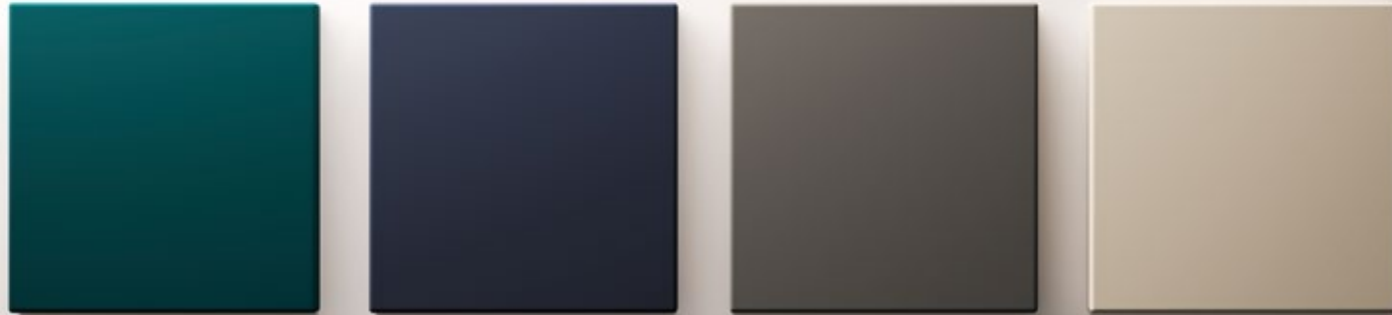


LG Hausys sets new trends in Quality.

Continuous colour development to make your colour decisions easier.

Magnificent colours bring excellent interior architecture to life. For many years, different shades of white have dominated, brought to life by adding attractive feature colours, and with the skilful blending of different shades and materials.

Our colour developers are constantly observing international markets, maintain contacts with top international designers and architects and ingeniously incorporate developments from other sectors. The result: a relevant collection with which the very best architects, designers and creatives enjoy working. Marcel Wanders and Karim Rashid have created colours for us, while Zaha Hadid, Alessandro Mendini, Ron Arad, Christian Liaigre and many more have been relying on HI-MACS® for years – time and time again.



The new Velvet colours, belonging to the Solid range, take inspiration from the beauty of the natural world including rich organic pigments and tactile materials such as leather and raw clay. Evergreen, Cosmic Blue, Mink and Suede join together to create atmospheric finishes for the highest quality solid surface material.

Photographed by Rafael Krotz



The brand new HI-MACS Structura® range can be used in interior design, as well as outdoors, for instance as the cladding for a façade. And the unique highlight? Designers have the opportunity to create and produce their very own individual designs.

HI-MACS Structura®. The next great idea from HI-MACS®.

HI-MACS® can now be three-dimensionally textured, thanks to HI-MACS Structura® and our new thermoforming technology. With ten attractive patterns in the standard range and the option to create your own bespoke designs, we expand the possibilities of your design using HI-MACS®.

Sheet material, sinks, bowls and a comprehensive accessories range.

HI-MACS® sheet material comes in 3 mm, 6 mm, 9 mm, 12 mm and 19 mm thicknesses and in six standard formats. The 12 mm thick sheet material is also available in the larger 1350 x 3680 mm format.

The comprehensive HI-MACS® bowls, sinks and top-mounted basins range provides products for bathrooms, kitchens, hospitals and many other settings. All sinks and bowls can be incorporated or integrated flush within the sheets. Special customised products are also available outside the standard range.

The standard HI-MACS® formats are 930 x 3000 mm, 760 x 2490 mm, 910 x 2490 mm, 760 x 3680 mm, 910 x 3680 mm and 1350 x 3680 mm.



Facades and Wall Cladding

HI-MACS® superior quality makes it ideal for using in cladding projects, facades and wall linings.

Making a grand entrance

The roof sculpture appears to float above the entrance. In reality, the striking roof and wall construction was seamlessly assembled from over 100 large-scale HI-MACS® plates. Coupled with its timber and steel substructure, this produces an aesthetic and yet stable masterpiece.

The entrance foyer opens to the outside through the large windows. Inside, the ceiling that lets light flood in coupled with the reception desks, both made of HI-MACS®, provide a link to the exterior façade made of the same material.



Entrance hall Hanse Merkur headquarters

Location: Hamburg, Germany

Design: Querkopf Architekten GmbH, Wasfy Taha, Fionn Mögel, Germany, querkopf-architekten.de

Fabrication: Likoo / Betriebsgesellschaft GmbH, Germany, likoo.de

HI-MACS® Supplier: Klöpfer Surfaces, Germany

Mounting System: KEIL Befestigungstechnik GmbH, Germany, keil.eu

Material: HI-MACS®-FR, Alpine White



Twisting the upper sections of the lengths of HI-MACS® creates an enthralling interplay of colours between the matt solid surface material and the glistening metallic wall behind.

Forbury Place

Location: Reading, UK

Design: Aukett Swanke, UK, aukettswanke.com

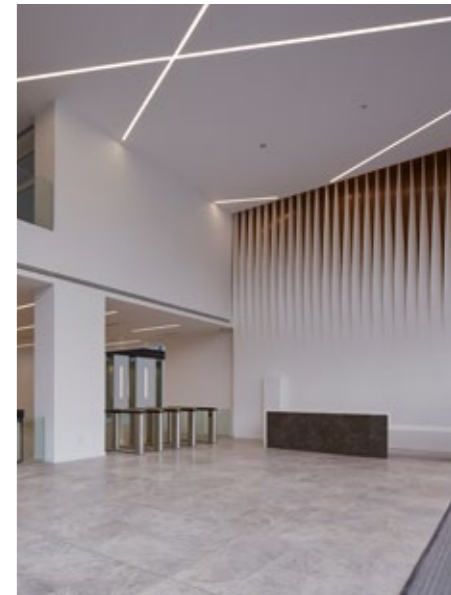
Fabrication: BSF Solid Surfaces Ltd, UK, bsfsolidsurfaces.com

HI-MACS® Supplier: James Latham Plc, UK

Material: HI-MACS®, Nordic White

The rock you can distort

The wall installation in the entrance foyer of this building creates artwork in the space, while the white HI-MACS® at ground level creates a calming solid surface, its three-dimensionality producing a thrilling contrast to what is above.



All images on this page: Photographed by Edmund Summer

Public Buildings and Offices

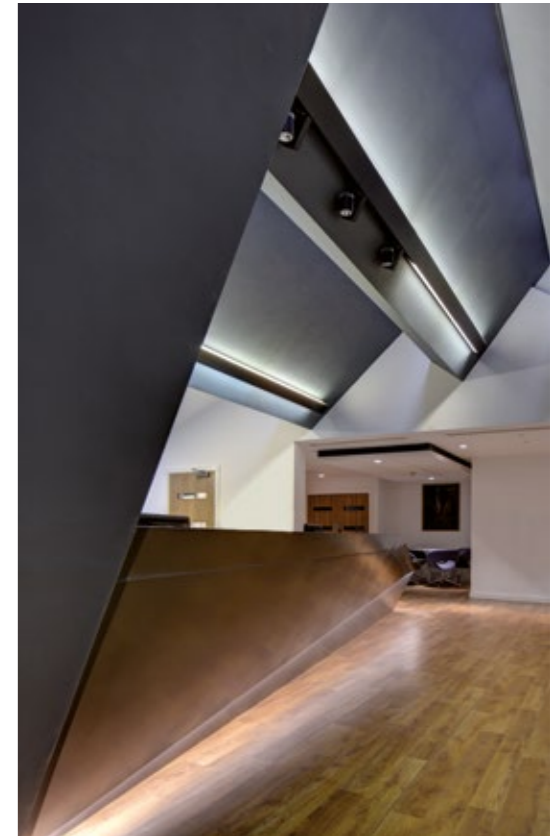
The requirements for public spaces are very demanding. It's therefore good to know that HI-MACS® regularly undergoes all of the relevant product tests and holds all the required certificates to prove its superior quality.

Because the first impression is crucial

It is no coincidence that HI-MACS® is used so frequently in the design of entrance foyers. With its tough, easy-care, elegant surface that is pleasing to touch, the material subtly communicates the style and the values held by clients.



This reception desk made of Midnight Grey HI-MACS® has the appearance of a dynamic ramp. The two varying heights of the desk produce professional distance at the front of the entrance foyer, whilst permitting informal proximity in the area where people communicate with employees.



All images on this page: Photographed by Infinite 3D Ltd.

Ashton 6th Form College

Location: Ashton, UK

Design: GA Studio, UK, gastudio.co.uk

Fabrication: Lomax interiors, UK, lomaxinteriors.com

HI-MACS® Supplier: James Latham Plc

Material: HI-MACS®, Midnight Grey



The pleasing warm surface finish makes HI-MACS® the ideal material for the seating and tables in the restaurant.

Aupark Shopping Center

Location: Bratislava, Slovakia

Design: Kyzlink Architects

Fabrication: A.M.O.S. Design s.r.o.

Material: HI-MACS® Banana, Alpine White



In high traffic eating areas, a robust material is required

Food courts are today's solution for people eating together. The bright yellow HI-MACS® used for the seats and recess panelling creates a colourful statement feature, while the semi-circular counters in white HI-MACS® give the restaurant an elegant touch. The clients opted for the Solid Surface Material, particularly because the robust and easy-care surface guarantees the durability of the installation.



The illuminated bank

Illuminated counters, cabins, walls, doors and reception desks: the translucence of HI-MACS® has been effectively used on almost all the furnishings in this bank branch. The varying brightness – seen here on the graduated counter – is achieved by milling the material to different thicknesses.



Raiffeisen Mendrisio

Location: Mendrisio, Switzerland

Design: Studio d'architettura Casali Sagl, Switzerland, studiocasali.ch

Fabrication: Il Falegname Fabrizio Sagl, Switzerland, ilfalegname.ch

HI-MACS® Supplier: kläuster acrylstein ag, Switzerland

Material: HI-MACS®, Opal

The windows continue the polygonal form of the HI-MACS® structure, underscoring the aesthetic of the diamond-shaped surfaces.

HypoVereinsbank-Tower

Location: Munich, Germany

Design: HENN GmbH Munich, Germany, henn.com

HI-MACS® Supplier: Klöpfer Surfaces, Germany

Material: HI-MACS®, Alpine White



Ultra-complex geometry of the asymmetrical crystal

The angular white entity winds up three floors of the foyer of this bank, opening up new and enthralling perspectives to visitors. Even experienced designers and engineers were challenged by this construction. The 36-tonne 850 m2 construction was assembled from a total of 500 individual sections and is supported by an in-house developed double-layer substructure.



Hospitality and Gastronomy

HI-MACS® creates visual, statement features in the trendiest of bars, the most upmarket of restaurants and the most happening clubs. Especially for internationally operating hospitality chains it is good to know that LG Hausys offers a global after sales service with their network-partners.

Laurenkerk Alkmaar

Location: Alkmaar, The Netherlands

Design: OPERA Amsterdam,
The Netherlands

Fabrication: Houtwerk B.V.,
The Netherlands

HI-MACS® Supplier: Baars & Bloemhoff,
The Netherlands

Material: HI-MACS®, Black



This HI-MACS® installation is a beautiful creation and a functional counter in one.



Combine HI-MACS® with other high quality materials for a unique display
Light oak is used here as the work surface, which sits perfectly into the HI-MACS® shell. The solid-looking front and side walls are made of black HI-MACS®. In spite of this, they look as if they are floating: the ingenious lighting allowing a warm glowing light to escape at the foot of the counter.



All images on this page: Photographed by Thorsten Ruppert

This stylish bar counter is a must for any city
The reflective lamps highlight the fact that this bar has to look perfect from all angles. And that is how it has been manufactured: individual surfaces are joined seamlessly to form the complete angular entity.



Bar Main Palais

Location: Frankfurt am Main, Germany
Designer: PurPur GmbH
Fabrication: Paul Schad Tischlerei GmbH, schad-trier.de
HI-MACS® supplier: Klöpfer Surfaces, Germany
Material: HI-MACS®, Alpine White



TrickShot

Location: Bucharest, Romania
Designer: Sebastian Mindroiu | Pick Two
Fabrication: Atvangarde Surfaces, Romania, atvangarde.ro
Material: HI-MACS®, Alpine White

True to its name: HI-MACS® in the TrickShot
The back-lit pattern and words in this Romanian bowling, darts and billiards club can be switched off when not in use. The illuminated rear-milled cut-outs mean that the surface remains smooth and easy to clean.

Photographed by Stelian Popa



All images on this page: Photographed by Tiziana Arici

WINEOLED®

Designer: Deslabs, Italy, deslabs.it
Fabrication: DESLABS Lighting, wineoled.com
Material: HI-MACS®, Alpine White

Wine experts love HI-MACS®
The Deslabs designers are experts in selecting materials, high-tech and wine: using the cutting-edge WINEOLED® product, professional wine-tasters can now easily judge the colour and clarity of wine. Deslabs has designed and created this lamp using the best quality materials such as HI-MACS®, alongside cutting edge technologies such as OLED lighting and Tesla's iconic wireless power transfer.



Novotel Madrid Center

Location: Madrid, Spain

Design: International Hospitality Projects (IHP), Spain, ihp-group.com

Material: HI-MACS®, Alpine White

When the world's biggest Novotel undergoes a makeover The Novotel chain of hotels has undertaken a major design offensive in recent years. And only top quality products were considered for the redesign of the flagship hotel in Madrid: the design focused on visual and functional high quality, coupled with the desire to convey as 'natural an impression' as possible. The three HI-MACS® linear reception desks, discreetly backlit around the base, and the floating 'light hoods' above them, form a single unit, while the massive columns in the foyer are also manufactured from HI-MACS® Alpine White.

A total of six impressive HI-MACS® columns form the thoroughfare to the reception foyer and thus shape the heart of the lobby.



Shops and Exhibitions

It is an accepted fact in retail, that no compromises can be made in terms of quality. And HI-MACS® does just what the high-tech brand LG promises. With its limitless possibilities, the material meets the requirements for prestigious perfectly.



All images on this page: Photographed by Atvangarde



City Park Mall Constanța

Location: City Park Mall Constanța, Romania
Design: Atvangarde, Romania, atvangarde.ro
Fabrication: Atvangarde, Romania, atvangarde.ro
Material: HI-MACS®, Black, Alpine White

Shopping malls demand the ultimate mix of high-quality design and perfect durability. Signposts and information booths which have been illuminated are much easier to clean if the surface is seamless, without grooves and joins. Thus this backlit unit made from HI-MACS® is the perfect solution. Whether in black or white: HI-MACS® creates eye-catching visual features.



All images on this page: Photographed by Olaf Becker, Becker Lacour

LG Signature Pavillion

Location: IFA Berlin, Germany
Design: Jason Bruges Studio, UK, jasonbruges.com (total concept) – Architect Soo-in Yang, Korea (pavilion) – Innocean, Korea innocean.eu (exhibition presentation concept)
Fabrication: Expotechnik Group, Germany, expotechnik.com – Ackermann GmbH, Germany, ackermannmbh.de
HI-MACS® supplier: Klöpfer Surfaces, Germany
Material: HI-MACS®, Alpine White



LG is synonymous with stringent standards and the ultimate in quality. When LG designed the Signature Pavilion at IFA in Berlin, for the premium products from its own electronics division, it was obvious that the stand would have to be constructed from HI-MACS®.

Healthcare

Cleanliness and sterility is paramount in hospitals and laboratories and any materials used should meet the strictest quality-standards. Its internationally certified resistance to dirt, viruses, bacteria and numerous chemicals makes HI-MACS® the first material of choice in the healthcare sector.



Denttaglio Clinic

Location: Bucharest, Romania

Design: Atvanguard Design Team, Romania, atvanguard.ro

Fabrication: Atvanguard, Romania, atvanguard.ro

Material: HI-MACS®, Alpine White



Stomamed Dental Clinic

Location: Bratislava, Slovak Republic

Design: Pro-Style s.r.o.

Fabrication: Drevovyroba Podzimek, Czech Republic, drevovyroba.podzimek.cz

Material: HI-MACS®, Emerald

Perfect working conditions included

Optimum hygiene properties in this clinic mean that the material has to be easy to clean, should not have any joints in which dirt, viruses or bacteria can accumulate and it needs to be able to withstand the chemicals and physical impacts of dental technicians with ease. In the Dental Clinic in Bratislava, the installation in fresh HI-MACS® Emerald looks attractive too.



All images on this page: Photographed by Katarina Bakso Dibrarajova



HI-MACS® lights up the Dental clinic

The many nuances of a pure white surface only really come to light when specific lighting effects push the limits of the colour spectrum: an aim that has been achieved with this reception desk and coordinating low coffee table. The curved silhouette of the desk can be produced with ease using HI-MACS®, a shape that simply would have been impossible with different materials.



All images on this page: Photographed by Atvanguard

Living Spaces

Any materials used within your home should be selected with utmost care as you will be using them for many years. The exclusive 15-year warranty with a Quality Club fabricator ensures that your satisfaction is guaranteed.

All images on this page: Photographed by Frank Hanswijk



Fort Asperen

Location: Acquoy, The Netherlands

Design: Bureau SLA, The Netherlands, bureausla.nl

HI-MACS® supplier: Baars & Bloemhoff, The Netherlands

Material: HI-MACS®, Alpine White



Flatiron House

Location: London, United Kingdom

Design: FORMstudio, United Kingdom, formstudio.co.uk

Fabrication: Solid Fabrications, United Kingdom, solidfabrications.co.uk

HI-MACS® supplier: James Latham Plc, UK

Material: HI-MACS®, Alpine White

“A staircase with rooms”

HI-MACS® was one of the few materials that could take the shape of this extraordinary staircase, due to its ability to be shaped to a very tight radius. HI-MACS® enables the manufacture of the structure in very small sections which is then finished on site in order to create a continuous surface.

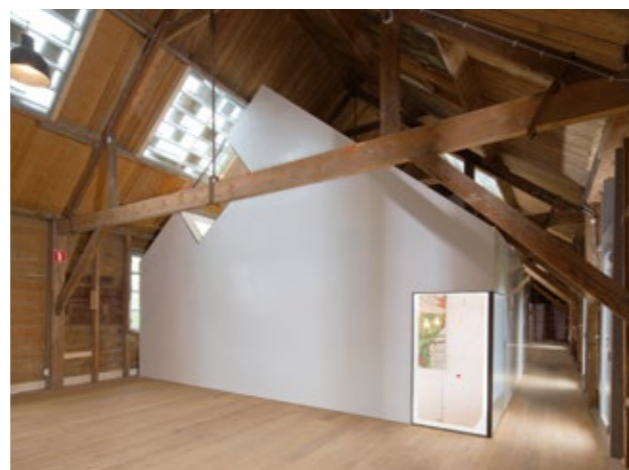
With a project using such a density of materials, the contractor gains valuable time, thanks to the Thermalcure treatment of HI-MACS®, which can be sanded to a smooth finish much more quickly than other materials.



The signature staircase is key and centre of the narrow building: perfectly executed in HI-MACS®, it feels natural and fluid and adds lightness to the entire house.

The white house within the brown house

A fascinating idea: the traditional wooden house with its heavy wooden-beamed roof was first gutted and then enhanced with an ultra-modern house within a house. The “little house” is entirely made of HI-MACS®. And once again it is clear how traditional wood and innovative HI-MACS® complement each other wonderfully.



All images on this page: Photographed by Bruce Hemming



Kitchen

The ingredients, as well as the material on which they are prepared, have a key role to play in creating a thoroughly high-quality meal. HI-MACS® is a non-porous, dirt-repellent and hygienic surface, and combined with its Thermalcure-technology, results in the best surface-quality for working with food and everyday household chemicals.



'Karan' by Rastelli

Design: Karim Rashid, USA, karimrashid.com

Fabricator: Dform Srl, Italy, dform.it

Material: HI-MACS®, Alpine White

Ultra-large radii meet cubic linear shapes

Karim Rashid is renowned in his field. He understands how to combine tension and tranquillity. His design for Rastellis Karan Kitchens is thrilling, sensual, confident and timeless in one. All work surfaces, including the table with its curved leg and the elliptical opening, are moulded using white HI-MACS® elements.

Le Baou

Location: Aix-en-Provence, France

Design: Charlotte Raynaud, France, charlotteraynaud.com

Fabricator: Felix Hegenbart SARL, France, felixhegenbart.com

HI-MACS® Supplier: Mobistrat, France

Material: HI-MACS®, Crystal Beige

Kitchen island 2.0

The monolithic play on the shape of this kitchen island leads to the panels meeting at obtuse angles: like on a cliff face, from which the element has been named (in Provençal French "Le Baou" means "rock"). Nevertheless they have to be assembled to create a compact seamless entity, otherwise its appearance and functionality would suffer.



Novy

Design: Novy, Belgium, novy.be

Fabrication: Novy, Belgium, novy.be

HI-MACS® supplier: Engels Design & Decoration, Belgium

Material: HI-MACS®, Alpine White

Artistic feature lighting and extractor hood in one

Two ultra-flat and energy-efficient motors and state-of-the-art LED technology on the one hand, coupled with 3 mm thick HI-MACS® as the perfect surface of the equipment are the prerequisites for producing this wonderful innovation.

Photographed by Novy

Simone Piva

Location: Spazio Canova, Milano, Italy

Design: Simone Piva, Italy, simonepiva.com

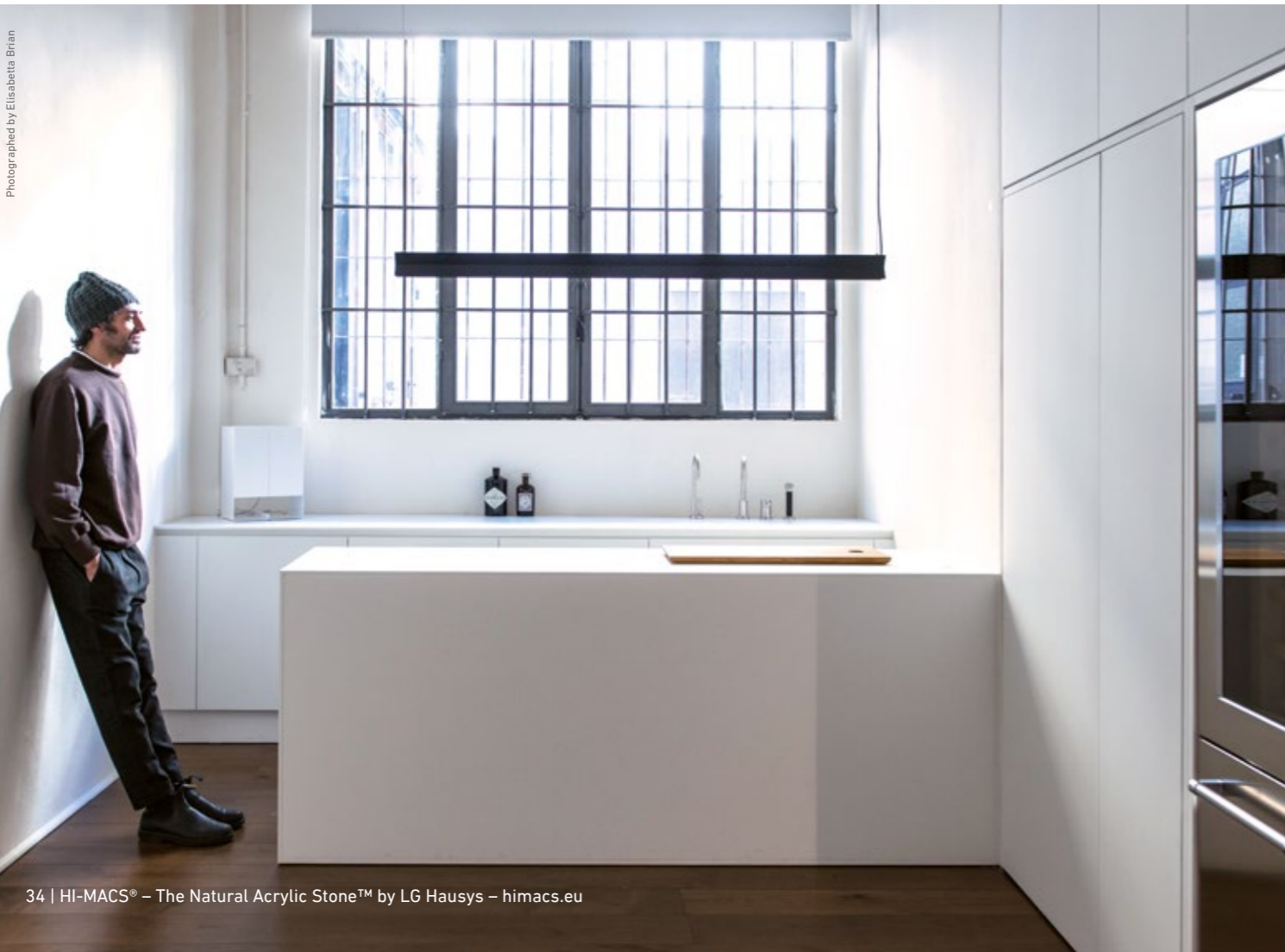
Fabrication: Simone Piva, Italy, simonepiva.com

Material: HI-MACS®, Alpine White

Elegance and functionality: reduced to the bare minimum

The eye sees enchanting simplicity and pure elegance. The hand feels a matt satin finish, a wondrously velvety finish, which, above all, makes the fronts of the furniture ultra-unique.

Photographed by Elisabetta Brian



Bath

Thanks to its waterproof surface and the extensive range of high-quality washbasins, HI-MACS® is becoming hugely popular. The warm, pleasing feel of the material, coupled with its ease of care means HI-MACS® is simply perfect in the bathroom.

Verdonschot

Design: Beaubad, Belgium, beaubad.be

Fabrication: Beaubad, Belgium, beaubad.be

HI-MACS® supplier: Engels Design & Decoration, Belgium

Material: HI-MACS®, Babylon Beige



All images on this page: Photographed by Kris Thijs

Concrete, wood and HI-MACS® are a great trio

HI-MACS® becomes especially beautiful when combined with other high-quality materials: the broad oak panel floor, concrete wall, HI-MACS® washbasin, rear wall and furniture fronts all combine to create a functionally gorgeous entity. The shade Babylon Beige provides a perfect link between the three different materials.



Photographed by Baths by Clay



Bath by Clay – Level

Location: The Netherlands
Design: Baths by Clay, The Netherlands, bathsbyclay.com
Fabrication: Baths by Clay, The Netherlands, bathsbyclay.com
HI-MACS® supplier: Baars & Bloemhoff, The Netherlands
Material: HI-MACS®, Alpine White

Water & HI-MACS® – the perfect partnership

This specialist bathroom design company used HI-MACS® throughout their furniture collection. This minimalist washbasin plays with the thickness of the material: the edge is precisely 12 mm thick. The design stands out due to the three different levels: basin, tap level and washstand are elegantly graduated.

Private Bath – Kipfenberg

Location: Kipfenberg, Germany
Design: Schreinerei Thorsten Mayer, Germany, SchreinerMayer.de
Fabrication: Schreinerei Thorsten Mayer, Germany, SchreinerMayer.de
HI-MACS® supplier: Klöpfer Surfaces, Germany
Material: HI-MACS®, Alpine White, Beige



Wall cladding, floor, washbasin and foot bath: two colours, one material
This is a true "HI-MACS®" bathroom: virtually all the functional elements are made of the material. Easy-care, ultra-pleasing to touch and above all, beautiful to behold.

Not Only White

Design: Marike Andeweg, The Netherlands
Fabrication: Not Only White, The Netherlands, notonlywhite.com
Material: HI-MACS®, Alpine White, Grey, Concrete Grey



Almost 'monastically' minimalist
Minimum fuss with maximum functionality are aspects that shape the thinking of the Dutch designer Marike Andeweg, who creates modern design classics with her "Not Only White" collection: the simple oval basin and the slim silhouette of the washbasin complement each other in perfect harmony.

All images on this page: Photographed by Studio Heitzer

Furniture Design

Whether it is used for hexagonal tables with internal lighting, honeycomb-shaped shelving, engraved counters or thermoformed seating, HI-MACS® provides limitless design options and maximum material quality.



Medusa Lamp

Design: Misha Belyaev, mishabelyaev.com

Fabrication: Karat llc

Material: HI-MACS®, Opal

Lamp and table form a single entity

In recent years, HI-MACS® has increasingly made inroads into mass-market furniture production made easier with the global network of reliable machining and service partners. Designers love its limitless possibilities, perfect precision and lighting effects, beautifully presented here in the HI-MACS® Lucent collection.

Lamp "FILTER"

Location: Rotterdam, The Netherlands

Design: Sabine Marcelis, The Netherlands, sabinemarcelis.com

Fabrication: Solid Factory, The Netherlands

HI-MACS® supplier: Baars & Bloemhoff, The Netherlands

Material: HI-MACS®, Arctic Granite, Gemini, Opal, Star Queen



Feature lighting or work of art?

These circular statement lights come to life with the fascinating combined shades of HI-MACS® and other attractive materials. The neon light strip runs around the inside of the ring and interplays with the different materials, each with varying transparency.



Tulip

Location: Toulouse, France

Design: Pierre Cabrera – design Studio, France, pierre-cabrera.fr

Fabrication: Pierre Cabrera, France, pierre-cabrera.fr

HI-MACS® supplier: Planacryl, France

Material: HI-MACS®, Opal

HI-MACS® exudes versatility

The design of this atmospheric statement lighting is made possible by the machining and material properties of HI-MACS®: its three-dimensional mouldability, high light permeability, simple sawing, cutting and sanding deliver the perfect base for this discerning product.

Outdoor

Materials used outside are exposed to the weather all year round. This means exposure to sun and rain, snow and ice, a lot of moisture and different temperatures as well as strong UV rays. HI-MACS® has passed all the required tests in a selection of colours, and has proved that outstanding quality can master the toughest outside conditions.



Private House

Location: Diessen am Ammersee, Germany

Design: Karl Dreer GmbH, Germany

Fabrication: Schreinerei Karl Dreer GmbH, dreer-gmbh.de

HI-MACS® supplier: Klöpfer Surfaces, Germany

Material: HI-MACS®, Alpine White

Outdoors is the new indoors for HI-MACS®

More and more architects and builders are appreciating the hardwearing qualities of HI-MACS® and are using the material for outdoor furniture or outside façade designs. The result: expansive, virtually seamless surfaces and an attractive visual style emanating from the linear or curved contours.



All images on this page: Photographed by Melanie Gotschke

Education

When it comes to educational buildings, the users are usually young people. HI-MACS® extreme toughness and ease of maintenance are thus the best prerequisites to withstand everyday life in nursery schools, schools, universities and other institutions. Many experts are in agreement that HI-MACS® educational materials and training offers are the best on the market.



Photographed by Claudio Bader

Kindergarten

Location: Cadepezzo, Switzerland

Design: Herrmann Flavio, Switzerland

Fabrication: IL Falegname Fabrizio Sagl, Switzerland, ilfalegname.ch

HI-MACS® supplier: klausler acrylstein ag, Switzerland

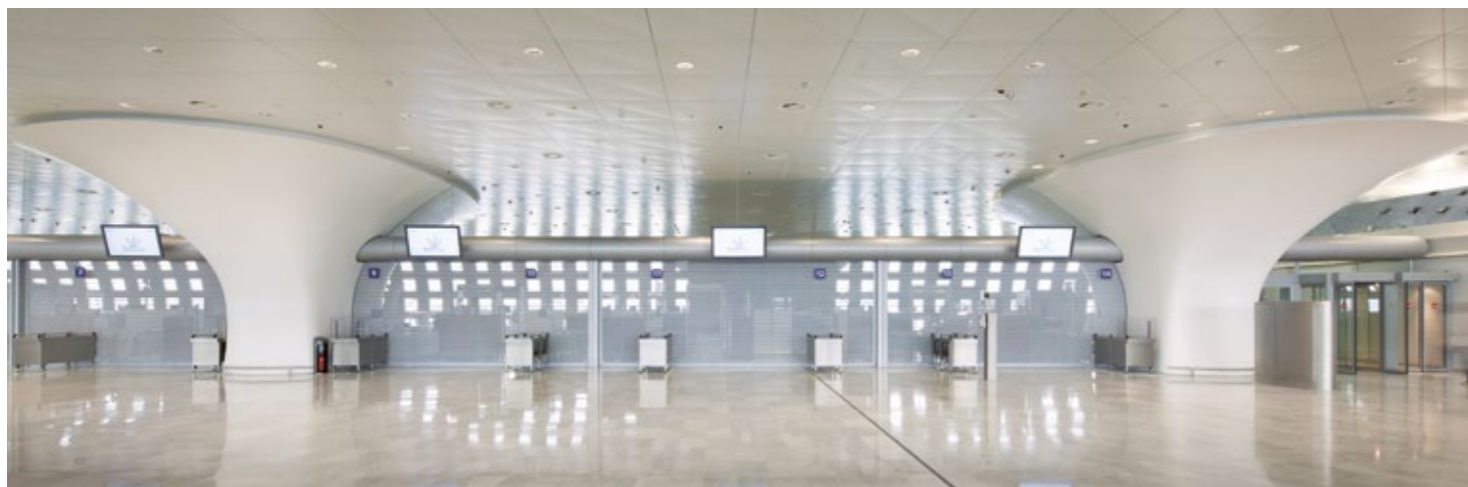
Material: HI-MACS®, Alpine White, Sky Blue, Banana, Light Green, Sapphire, Ruby, Emerald

Like pastel-coloured sweets

Children and staff alike love this sink unit in a Swiss nursery school. A damp cloth for light dirt or a mild abrasive cleaning agent and pads for tougher stains mean the unit is attractive, yet easy to clean. Thermalcure technology ensures an even better surface quality.

Airport

Desks, counters and shelving at airports are exposed to extremely heavy and constant use, being touched by travellers and staff alike. It is especially here that the perfect finish of HI-MACS® comes into its own – even easier to clean and more robust, thanks to its innovative Thermalcure-technology.



Column Cladding at Paris Charles de Gaulle Airport

Location: Paris, France

Designer: Marc Fidelle and Andrei David, Direction de Ingénierie et de l'Architecture d'Aéroports de Paris, France, aeroportsdeparis.fr

Fabrication: LCCA, France, lcca.fr

Material: HI-MACS®, Alpine White



All images on this page: Photographed by Mathieu Ducros



The perfect start to a holiday

Thousands of passengers, an infinite volume of baggage, comprehensive regulations and safety standards that have to be complied with, these extreme circumstances can often occur at airports which demand the ultimate from its interior architecture. HI-MACS® has proven itself over and over again in recent years to be an extremely durable and superior quality material that withstands both: the ongoing stress test of a vibrant airport and the requirements of the users. In addition, its versatility and superior appearance are the best prerequisites for successfully coping with whatever occurs day to day in the airport.

Marine Industry

A new composition of HI-MACS® from the Hightech laboratories of LG has been developed for use in shipbuilding: HI-MACS® FR, which has been awarded the IMO certificate module B and D in compliance with the Marine Equipment Directive for its fire resistant and fire-retardant properties.



MS Amadea

Location: Hamburg, Germany

Design: Phoenix Reisen GmbH, Germany, phoenixreisen.com

Fabrication: 2 Pier GmbH – Holztec Innenausbau GmbH, Germany, 2pier.de – tb-berndt.de

HI-MACS® supplier: Klöpfer Surfaces, Germany

Material: HI-MACS®, Alpine White, Arctic Granite

At home on the high seas

HI-MACS® brings class and spaciousness to the bathroom design of the ship's cabins on the MS Amadea. The choice of a material makes a very clear statement about how one views quality.



Best of the Last Decade

In recent years HI-MACS® has been specified more and more by architects and designers – only the best quality can convince demanding clientele like these. Thanks to their ability and talent and to the superior quality of material and fabrication some masterpieces have been achieved with HI-MACS®. Although not recent, they still inspire users and owners. A selection can be found here.

Photographed by Werner Huthmacher



Händel House

Location: Halle, Germany

Design: Gerhards & Glücker, Germany, gerhardsgluecker.com

Fabrication: Möbel Damm, moebel-damm.de

Material: HI-MACS®, Arctic White

Baroque forms to honour a baroque musician

This building to honour the great musician Georg Friedrich Händel transitions from an understated exhibition and reception area to an opulent Baroque hall. HI-MACS® links and enables both: the ornamental splendour as well as the subtle play of lights.

Hotel Puerta America

Location: Madrid, Spain

Design: from left to right: Christian Liaigre, France – Ron Arad, UK – Zaha Hadid Architects, UK – christian-liaigre.fr, ronarad.co.uk, zaha-hadid.com

Material: HI-MACS®, Alpine White, Black, Fiery Red

19 well-known architects and designers designed this hotel – naturally using HI-MACS®

The result of their work is simply breathtaking, with every room being a veritable stand-alone masterpiece. HI-MACS® was with them every step of the way – inspiring the designers to create their most daring designs.



All images: Photographed by diephotodesigner.de



Atlas Swimming Pool

Location: Paris, France

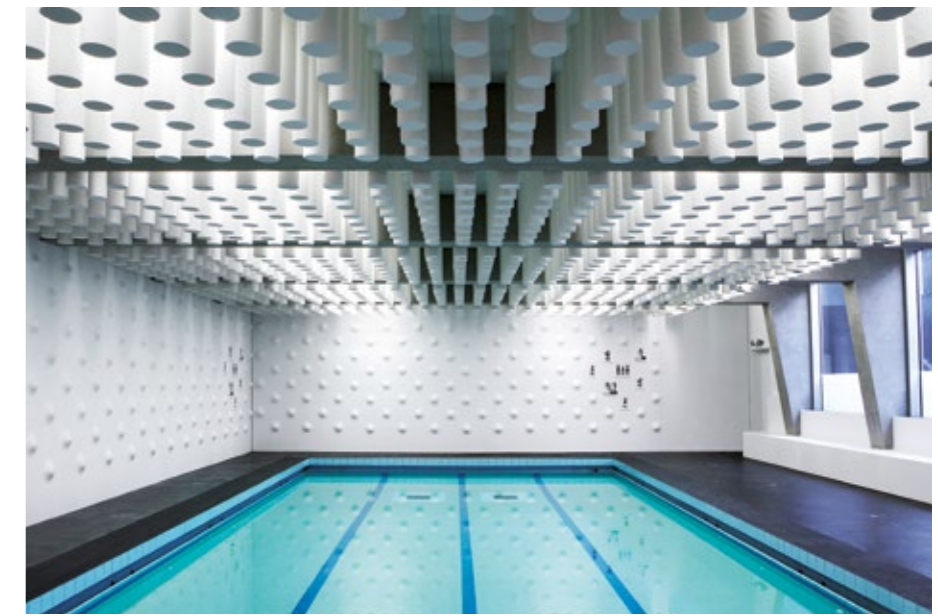
Design: Yonseux Architectes, France, yonseux.com

Fabrication: ASKA Interior, France, aska-interior.com

Material: HI-MACS® Arctic White

Water and HI-MACS® do mix

This indoor swimming pool in a Parisian school was designed mainly with HI-MACS®: parts of the exterior walls, the geometrical relief on the interior walls, the non-slip floor in the shower area and many individual items of furniture were all created in HI-MACS® Arctic White. Its perfect hygiene and ultra-flexible form are important properties of the material, which also gives the space a unique atmosphere.



Photographed by Alexandra Mocanu



All images: Photographed by Jan Bitter



Raiffeisen Bank Zürich

Location: Zürich, Switzerland

Design: NAU Architecture, Switzerland, Drexler Guinand Jauslin Architekten, Switzerland, nau.coop, dgj.ch

Fabrication: Wallcovering patterns design: ROK, Rippmann Oesterle Knauss, Switzerland, rok-office.com – Wallcovering and joinery: Glaeser Baden, Switzerland, glaeser.ch

Material: HI-MACS®, Alpine White

HI-MACS® helps create a personal vision

The Raiffeisen Bank in Zurich displays the portraits of former prominent residents that stand out thanks to the intricate cutting of triangles of different sizes and the spartan overall interior architectural design.

Showroom ALV

Location: Milan, Italy

Fabrication: Flusso, Facchinetti Group

Material: HI-MACS®, Ivory White

Handbags and gladrags

The central and pivotal element in this showroom is a circular filigree skeleton made of HI-MACS® that showcases to the fashionable accessories.



Photographed by Valter Baldan Fotografo

The best quality because our environment is worth it.

Countless internationally recognised certificates attest to the fact that HI-MACS® has a strong focus on ecological aspects. Without exception, all HI-MACS® products are manufactured in accordance with the ISO 14001 environmental standard.

Composition: aluminium trihydroxide, the main component of HI-MACS®, is a bi-product of aluminium production.

Manufacturing process: The production of this material is marked by an excellent energy balance. In addition, HI-MACS® plants in Cheongju (Korea) and Atlanta (USA) meet all environmental standards.

Transport: The material is transported from the USA to Europe exclusively by ship. Within Europe, HI-MACS® observes the Euro-5 standards for reduced particulate emissions. The partner-network of LG Hausys Europe is selected thoroughly: the transport partner for Europe guarantees recycling of wastewater, uses solar energy in the warehouse and trucks that run on gas. Therefore the LG Hausys-partner was awarded with the Green Truck Award 2013.

Processing: The material allows for virtually waste-free processing. **Commitment:** LG Hausys conducts and publishes regular environmental audits along with energy consumption analyses. Thanks to the use of non-polluting fuels, greenhouse gas emissions have been cut by 15,000 tons per year since 2008.

Formaldehyde free: Comprehensive examinations have been carried out by LG Hausys own laboratories as well as studies at reputable independent institutes. These studies have proven that following the curing process HI-MACS® material and adhesives are free from formaldehyde.



**The Eden collection.
Eco-friendly through and through.**

The Eden colour collection by LG Hausys is an environmentally friendly solid surface material available on the market today. This one-of-a-kind colour palette consists of up to 35% recycled materials and is available in 8 warm, natural shades.

The Eden collection has been recognised by the U.S. Scientific Certification System for the large proportion of recycled material it uses. Furthermore, projects made from HI-MACS® Eden are eligible for LEED (Leadership in Energy and Environmental Design) certification from the U.S. Green Building Council, and may receive up to 2 credits in various LEED categories. Another solid and sustainable reason to choose HI-MACS®.

We have a strong partner network for your most creative ideas.

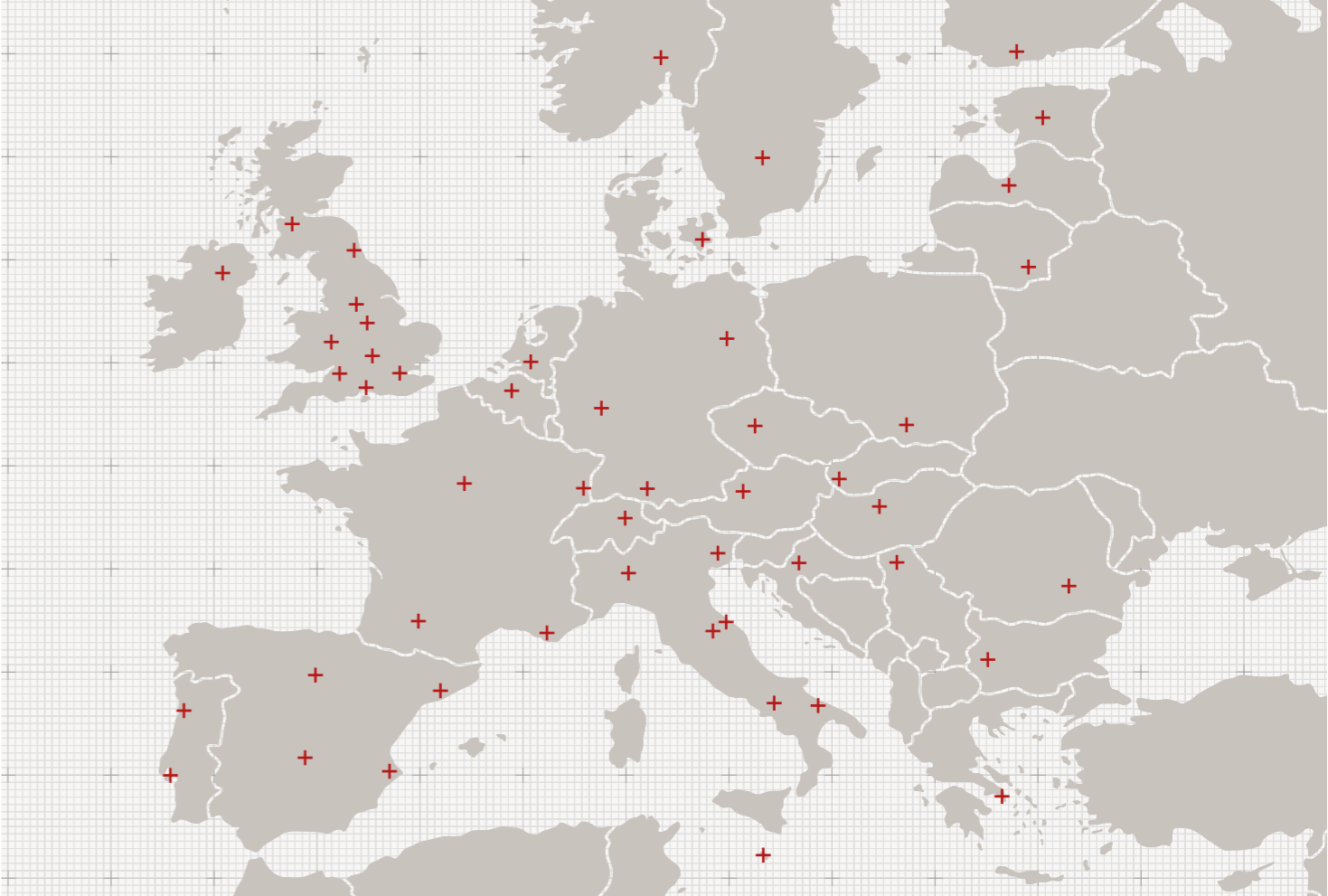
Architects and designers have awe-inspiring ideas. And exceptional craftsmen transform them into reality using HI-MACS®.

Contact us to find our network of exclusive distributors serving more than 5.000 fabricators across Europe and our numerous Quality Club Training Centers. This is our strategy to guarantee the best quality at all levels.

We can also offer you the security of our global LG After-sales Service with our experienced HI-MACS® experts all around the world.

All contact details of our network can be found at

himacs.eu
Because Quality Wins.



Dimensions – Sheet material

Standard Format

SHEET THICKNESS IN MM	SHEET WIDTH IN MM	SHEET LENGTH IN MM
3	930	3000 *
6	760	2490
6	910	2490 *
9	760	3680
9	910	3680 *
12	760	3680
12	910	3680 *
12	1350	3680 *
19	760	3680 *

* Only available in S028 Alpine White.

** Only available in S028 Alpine White and S006 Arctic White.

*** Only available in Solid colours.

Special Format

SHEET THICKNESS IN MM	SHEET WIDTH IN MM	SHEET LENGTH IN MM
6	910	2490 **
9	910	3680 **
12	910	3680 **
12	1350	3680 **
19	760	3680 ***

Size matters – to increase efficiency and reduce offcuts

HI-MACS® can be supplied in different sheet thicknesses, formats and sizes. Ideal for maximum cutting, minimum wastage and minimal costs. However, not all colours are available in all thicknesses. Please see the colour charts on the following pages for exact availability.

HI-MACS® fire resistant quality significantly widens the fields of application

HI-MACS® FR-version sheets are available in S728 Alpine White and manufactured to order in S801 Nougat Cream, S729 Ivory White, S706 Arctic White and S705 Grey.

Sheets in S728 Alpine White comply with the IMO Standard Modules B+D and M1. FR sheets are especially suitable for use in public buildings, external facades and in the marine industry.

Chemical resistance

HI-MACS® is a fully homogenous material with no pores and is thus simple and easy to clean.

TEST SUBSTANCE	APPLICATION TIME	EVALUATION OF G02 CHANGES	EVALUATION OF S06 CHANGES
Acetic acid	16h	no change	no change
Citric acid	16h	no change	no change
Sodium carbonate	16h	no change	no change
Ammonium hydroxide	16h	no change	no change
Ethyl alcohol	16h	no change	no change
White wine, red wine	16h	no change	no change
Cola drinks	16h	no change	no change
Instant coffee	16h	no change	no change
Black Tea	16h	no change	no change
Blackcurrant juice	16h	no change	no change
Cream	16h	no change	no change
Water	16h	no change	no change
Petrol	16h	no change	no change
Acetone	16h	3	3
Ethyl butyl acetate	16h	3	3
Butter	16h	no change	no change
Olive Oil	16h	no change	no change
Mustard	16h	no change	no change
Salt	16h	no change	no change
Onions	16h	no change	no change
Lipstick	16h	no change	no change
Common household disinfectant	16h	no change	no change
Black pen – ballpoint	16h	2	2 – 3
Stamping ink	16h	1	1
Cleaning agent	16h	no change	no change
Cleaning solution	16h	no change	no change
Wear resistance group according to DIN 68861*	16h	1B	1B
Evaluation according to DIN 68930 Table 1 Other work surfaces: wear resistance group: «1C»		Requirement met +	according to DIN 68861 & DIN 68930

* 1A = Excellent; 1F = very bad 0 = no visible result; 5 = damaged

Technical data sheet

HI-MACS® is extremely repellent to dirt and wear and tear, so that you can enjoy many years of pleasure with the outstanding quality of your new product.

SPECIFICATION	UNIT	RESULT SOLIDS	RESULT GRANITE	TEST METHODS
Flexural-E-modulus	MPa	8900	7730	DIN EN ISO 178
Flexural strength	MPa	70.1	64.3	ASTM D638
Breaking elongation	%	1	1.1	DIN EN ISO 178
Tensile strength	MPa	69.5	56.3	DIN EN ISO 527
Density	g/cm ³ kg/m ³	1.75 1750	1.65 1650	ISO 1183 ISO 1183
Ball indentation hardness	N/mm ²	257	239	DIN EN ISO 2039-1
Mohs hardness		2 to 3	2 to 3	EN 101
Pencil hardness		>9H	>9H	ISO 15184
Water absorption weight strength/thickness		<0,1% <0,1%	<0,1% <0,1%	DIN EN 438 Part 12
Impact resistance impactor drop ball test (fall height)	N mm	≥25 ≥1500	≥25 ≥1500	E DIN EN 438, 02/02 Part 2/20 E DIN EN 438, 02/02 Part 2/21
Slip resistance		>0,32 – 0,9		GMG100 (replaces R9)
Slip resistance		angle of acceptance of more than 10° to 19° = R10		DIN 51130
Climate change resistance	°C	≥0,05	≥0,05	AMK
Dry heat (pan base)	°C	≥100 (7C)		DIN 68 861, Part 7, 04-'85
Damp heat (pan base)	°C	≥100 (7C)		DIN 68 861, Part 8, 04-'85
Temperature change resistance	°C	no change		UNI 9429
Resistance to cigarette burns		6C	6B	DIN 68 861, Part 6, 11-'82
Scratch resistance		4D	4B	DIN 68 861, Part 4, 11-'81
Electrostatics Conductivity	>1x10 ¹² Ω	insulating non-conductive		DIN IEC 1340-4-1, 04-'92 EN 61340-5-1
Thermal conductivity	W/mK	0.636	0.55	DIN EN 12664
Thermal resistance	m ² K/W	0.038	0.045	DIN EN 12664
Thermal expansion co-efficient	mm/mK m/m/°C	0.048 30.0 x 10 ⁻⁶	0.055	DIN EN 14581
Water vapor transmission properties – diffusion resistance factor	μ	18607	16150	DIN EN ISO 12572
Dimensional change by change in relative humidity length thickness mass	% % %	-0.03 0.06 0.05	-0.02 0.03 0.05	DIN EN 318, edit. 5, 1998
Resistance to boiling water increase in weight increase in thickness	% %	<0,1 <0,1	>0,1 <0,1	E DIN EN 438, 02/02 Part 2/12
Light fastness (Xenon)	scale 0 – 10	better than 6	better than 6	DIN 53 387, 04-'89
Food tolerance		suitable for all colours		LMBG § 31
Hygiene		suitable	suitable	LGA Hygiene Certificate
Fire protection classification Flame-retardant properties MPA/NRW HI-MACS® MPA/NRW (BAM) 12 mm (BAM) 9 mm + back-up (Bodycote/Warrington) 12 mm		B1 non-dripping material B1 for all colours* B1 for all colours* B-s1 , d0 for all HI-MACS® colours* complies with BS 476 class 0		DIN 4102-1 DIN 5510 DIN 4102-1 BS EN ISO 11925-2 : 2002 BS EN 13823: 2002

* not currently applicable to Marmo, Galaxy, Volcanics, Lucent and Eden

Colours

Colours are key in design. Elegant Nordic White, warm Toffee Brown or mystical Cima. We have virtually any colour you could wish for.

Extra service on demand

If needed, LG Hausys Europe can produce different dimensions and bespoke colours. To learn more about the conditions, please contact us at himacs.eu



Lucia

Natural trendy colours characterised by linear-edged, midsize particles: three of those designed by Dutch Star Designer, Marcel Wanders.



Volcanics

Full of depth and mysticism, akin to a precious natural stone but with all of the advantages of "Natural Acrylic Stone™".



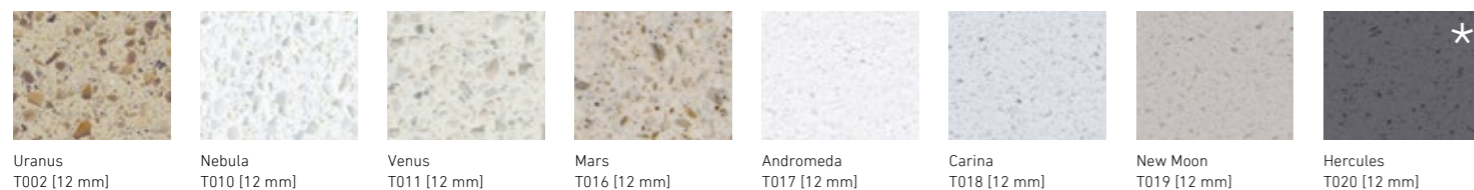
Marmo

Captivating random veined texture, reminiscent of marble.



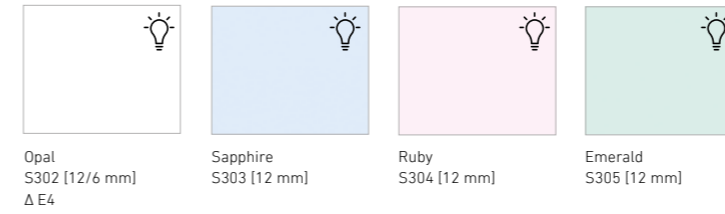
Aster (Galaxy)

With transparent grains and mother of pearl shimmer.



Lucent

When combined with precisely positioned light sources, the translucent pastel shades become transformed into dramatic design "highlights".



Solids

From elegant to extravagant, classic to ultra-contemporary.



19 mm: S028 Alpine White available in stock. All other solid colours on special request.

★ The basic HI-MACS® material is identical for every colour but it is important to note that darker and more heavily pigmented colours will show dust, scratches, haziness, marks left by hard water and other ordinary wear and tear more noticeably than lighter textured colours. Therefore colours marked with a ★ are less suitable for applications that are exposed to extensive surface contact such as worktops located in heavy traffic area as an example.

There may be deviations between the illustrated and actual colours owing to printing techniques. To receive the detailed colour range, please contact us at himacs.eu.

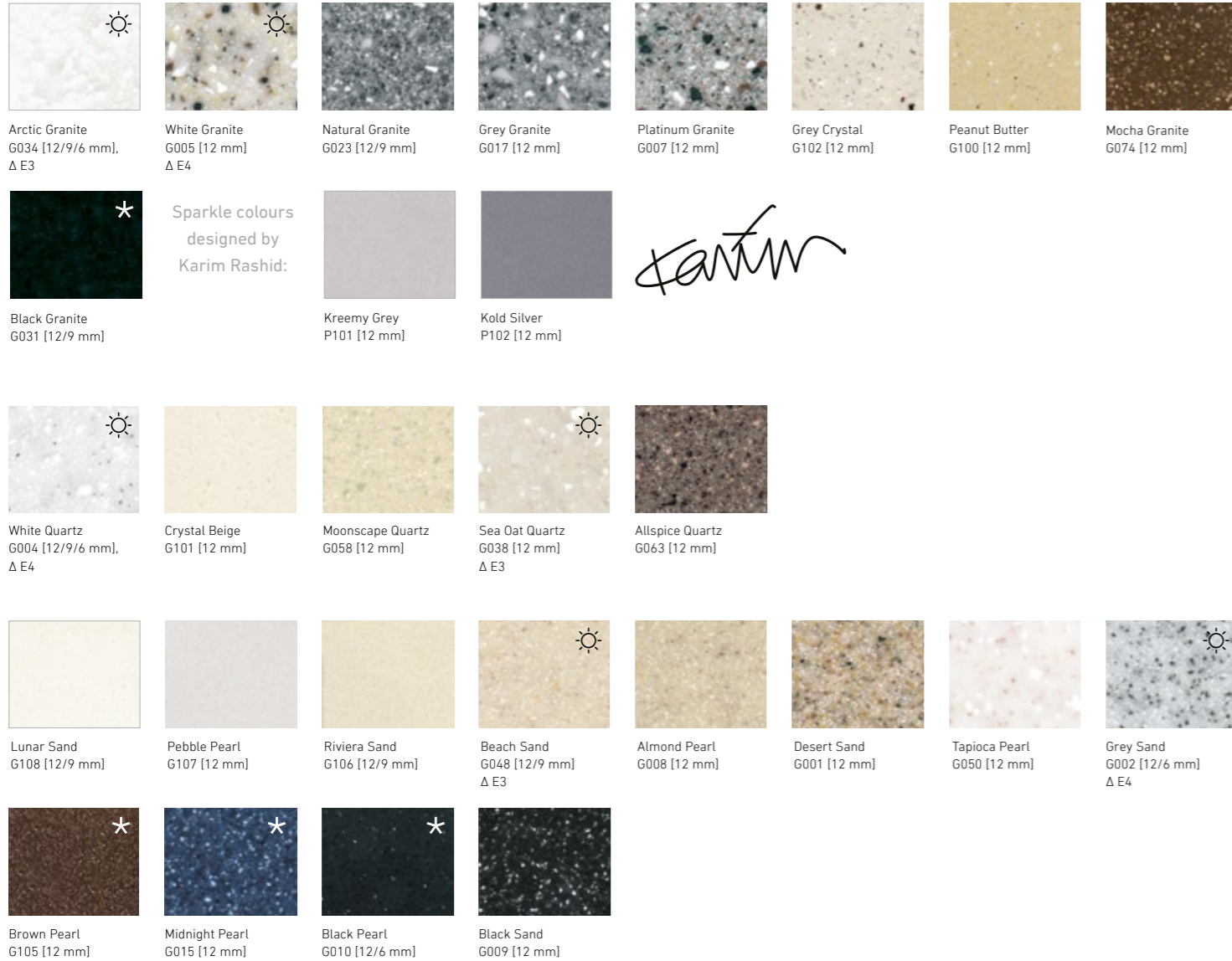
☀ Some HI-MACS® colours are particularly suitable for outdoor applications because of their good UV-resistance. HI-MACS® offers a 5 Year Warranty on colours' UV resistance for a tolerance of ΔE3 to ΔE4 and loss of gloss over 40%, 10 Year Warranty on colour leaching and 20 Year Warranty on colour peeling, swelling or delaminating. The warranty is applicable after the first installation and is only valid for the sheet material; adhesives are excluded. The conditions for this warranty are based on practical experience and on-going tests.

☁ Marmo is a randomly veined product, specific fabrication guidelines need to be followed. Ask your sales partner for more information or visit himacs.eu.

💡 Lucent colours have a higher level of translucency, more evident when combined with light sources.

Granite, Sparkle, Quartz, Sand & Pearl

A huge selection of textures and colours. Natural, elegant and perfect in combination.



Eden

A one-of-a-kind palette with warm natural shades and various grain sizes. What makes the collection unique: it consists of up to 35% recycled materials.



The Eden collection is available upon special request.

Scoring eco-credits across the board.

The LEED (Leadership in Energy and Environmental Design) seal is a proven classification system for ecological, resource-saving and sustainable construction. The credit-based certification process rates buildings according to different criteria. Opting for HI-MACS® Eden in new construction and renovation projects may provide up to 2 credits in the following LEED categories:

Indoor Environmental Quality (IEQ)

LEED IEQ 4.1: low-emission materials, adhesives and sealants (1 credit)

Materials & Resources (MR)

LEED MR 4.1: materials with more than 10% recycled content (1 credit)

LEED MR 4.2: materials with more than 20% recycled content (2 credits)

Sinks and Bowls

Creative designers have every option at their disposal to create washrooms, kitchens, hospitals and much more with the extensive range of HI-MACS® bowls and sinks.

HI-MACS® Bowls for bathroom

Pleasantly warm to the touch – simple to look after: HI-MACS® washbasins are produced in a casting process and can be perfectly fitted flush or supported in washstands made of HI-MACS®.



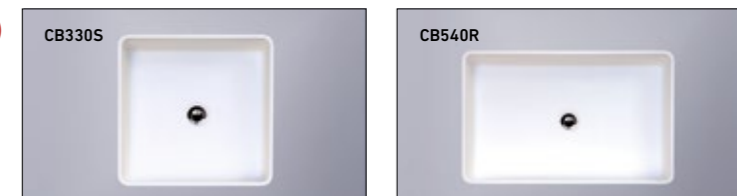
HI-MACS® Baby Bath

The neo-natal ward of a hospital is the one place where maximum hygiene, ergonomics and warmth is the order of the day. The ergonomic shape of the bowl is specifically designed for babies.



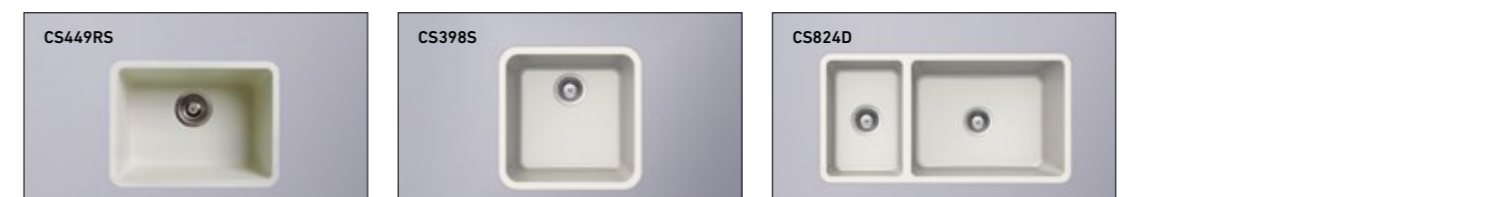
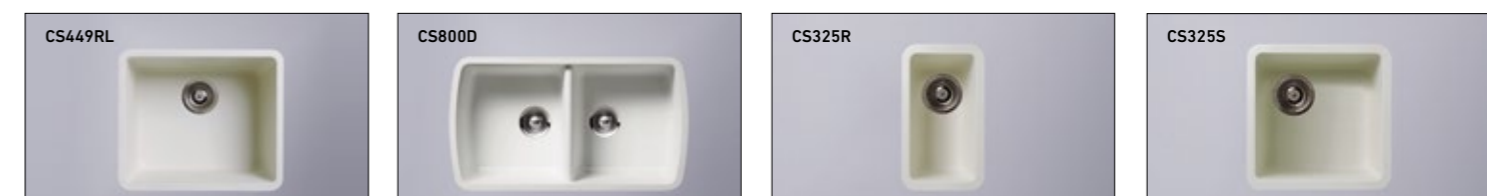
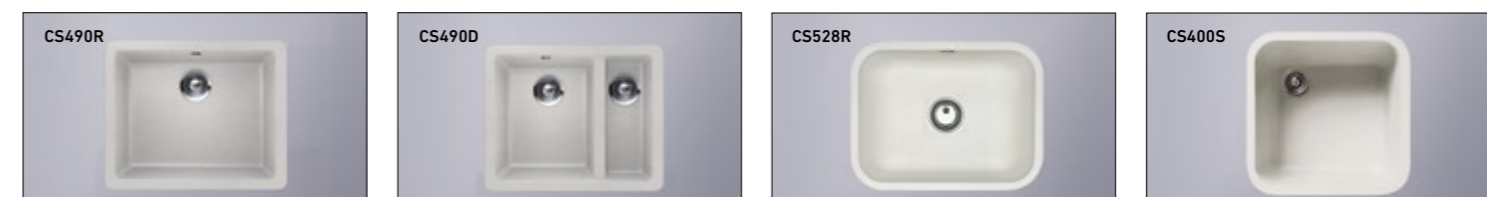
HI-MACS® Bowls for bathroom (top mount installation)

These three shapes are HI-MACS® answer to the trend for linear designs. All three bowls were exclusively designed as top-mounted bowls. The narrow radius of the two rectangular models creates exceptionally spacious bowls.



HI-MACS® Sinks

HI-MACS® sinks are produced using a high-quality casting technique. No matter which product you choose from our extensive, eminently combinable selection, all sinks are flush-mounted into the countertop or installed below the surface. Special custom-made creations are also an option.



Please feel free to contact us for further information.

HI-MACS®. Because Quality Wins.

European Headquarters:
LG Hausys Europe GmbH
Lyoner Str. 15
60528 Frankfurt
Germany
info@himacs.eu

To find the contact for your region, please visit our website.

himacs.eu



HI-MACS® Natural Acrylic Stone™ and HI-MACS Structura® are registered trademarks of LG Hausys Europe GmbH. All other trademarks and product names are trademarks or registered trademarks of their respective rights owners. The information contained in this brochure is intended to be for information only and can be amended at any time without prior notification. ©2017. LG Hausys Europe GmbH. All rights reserved.

Publisher's Details

2.Pier GmbH – Holztec Innenausbau GmbH, 2pier.de | A.M.O.S. Design s.r.o., amosdesign.eu | Ackermann GmbH, ackermanngmbh.de | Alexandra Mocanu, alexandramocanu.com | ASKA Interior, aska-interior.com | Atvanguard, avantgarde.ro | Aukett Swanke, aukettswanke.com | Baars & Bloemhoff, baars-bloemhoff.nl | Baths by Clay, bathsbyclay.com | Beaubad, beaubad.be | Bruce Hemming, bhphoto.biz | BSF Solid Surfaces Ltd, bsfsolidsurfaces.com | Bureau SLA, bureausla.nl | Charlotte Raynaud, charlotteraynaud.com | Christian Liaigre, christian-liaigre.fr | Claudio Bader, claudiobader.photography | Dano Veselsky, maxphoto.sk | Denis Dalmasso, denisdalmasso.com | DESLABS Lighting, wineoled.com | Deslabs, deslabs.it | Dform Srl, dform.it | diephotodesigner.de, diephotodesigner.de | Dominik Oberteis, oberteis.de | Dominik Reipka, reipka.de | Drevovyroba Podzimek, drevovyroba.podzimek.cz | Drexler Guinand Jauslin Architekten, dgj.ch | Edmund Sumner, edmundsumner.co.uk | Engels Design & Decoration, engels.be | Expotech Group, expotech.com | Felix Hegenbart, felixhegenbart.com | FORMstudio, formstudio.co.uk | Frank Hanswijk, frankhanswijk.nl | GA Studio, gastudio.co.uk | Gerhards & Glücker, gerhardsgluecker.com | Glaeser Baden, glaeser.ch | HENN GmbH Munich, henn.com | HGEsch Photography, hgesch.de | Houtwerk B.V., houtwerk.nl | IL Falegname Fabrizio Sagl, ilfalegname.ch | Infinite 3D Ltd., infinite3d.co.uk | Innocean, innocean.eu | International Hospitality Projects IHP, ihp-group.com | James Latham Plc, lathamtimber.co.uk | Jan Bitter, janbitter.de | Jason Bruges Studio, jasonbruges.be | Jesús Granada, jesusgranada.com | Karat llc, 18karatwholesale.com | Katarina Bako Dohranyova, katarinabako.sk | Klöpfer Surfaces, kloepfer-surfaces.de | Kyzlink Architects, kyzlink.com | LCCA, France, lcca.fr | ImLikoo / Betriebsgesellschaft GmbH, likoo.de | Lomax Interiors, lomaxinteriors.com | Mathieu Ducros, mathieuducros.com | Melanie Gotschke, diefotografarin-melanie.de | Misha Belyaev, mishabelyaev.com | Möbel Damm, moebel-damm.de | Mobistrat, mobistrat.fr | NAU Architecture, nau.coop | Not Only White, notonlywhite.com | Novy, novy.be | Olaf Becker – Becker Lacour, beckerlacour.com | Solid Fabrications, solidfabrications.co.uk | Paul Schad Tischlerei GmbH, schad-trier.de | Phoenix Reisen GmbH, phoenixreisen.com | Pierre Cabrera, pierre-cabrera.fr | Planacryl, planacryl.com | Pro-Style s.r.o., prostyle.cz | PurPur GmbH, purpur.de | Querkopf Architekten GmbH, querkopf-architekten.de | Rastelli, mikerastelliphotos.com | ROK, Rippmann Oesterle Knauss, rok-office.com | Ron Arad, ronrad.co.uk | Ronald Smits, ronaldsmits.nl | Sabine Marcellis, sabinemarcellis.com | Schreinerei Karl Dreer GmbH, dreer-gmbh.de | Schreinerei Thorsten Mayer, SchreinerMayer.de | Sebastian Scheuerecker, scheuerecker-photography.de | Simone Piva, simonepiva.com | Solid Factory, solidfactory.nl | Stelian Popa, stelianpopa.ro | Studio d'architettura Casali Sagl, studiocasali.ch | Studio Hetzer, studio-hetzer.de | Thorsten Ruppert, thorsteneruppert.com | Tiziana Arici, tizianarici.com | Werner Huthmacher, huthmacher-data.de | Yoonseux Architectes, yoonseux.com | Zaha Hadid Architects, zaha-hadid.com |